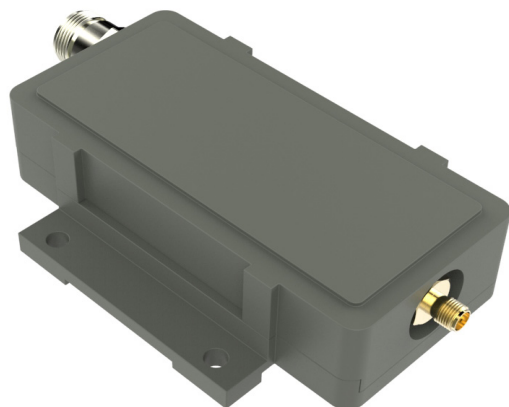


PLL BDC 7.25 - 7.75 GHz

7.25-7.75 GHz GHz to L-Band Block Down Converter



The X-Band PLL block down converter covers X-band within the frequency range 7.25 to 7.75 GHz. Fixed gain between 0 dB and 55 dB.

The BDC has some built in filtering for improved TX and IF margin, high IP3 and Low power consumption.

RF input is SMA female. IF output is standard L-band non inverted spectrum via N-,F- or SMA-connector. Options include customized LO, customized gain, separate DC power input and separate input for the external 10 MHz reference.

Features

- **Built-in filtering**
- **Low phase noise**
- **Choose between Internal Ref. or External Ref. input models**
- **Compact size and light weight**
- **Wide operating temperature range**
- **For outdoor use**
- **Low profile to fit 1U for build-in applications**

TECHNICAL SPECIFICATIONS

MODEL:	X-Band BDC
Input Frequency	7.25 - 7.75 GHz
LO Frequency	6.30 GHz or by request (Factory programmable)
Output Frequency	Within 950 - 1450 MHz
Gain	By request, 0 dB to 55 dB in 5dB steps (Factory programmable)
Flatness	±0.4 dB max. within 30 MHz ±2 dB max. over band
Noise Figure / Noise Temperature	1.0 dB / 75 K @ 50dB gain configuration max., increasing to appr. 20 dB / 28710 K @ 0 dB gain configuration
Phase Noise	-40 dBc @ 10 Hz -62 dBc @ 100 Hz -80 dBc @ 1 kHz -88 dBc @ 10 kHz -95 dBc @ 100 kHz -120 dBc @ ≥1MHz, typ.
Image Rejection	40 dB min.
Output P1dB	+15 dBm, +5 dBm <10 dB gain
Output IP3	+25 dBm, +15 dBm <10 dB gain
Output VSWR	2.1:1 max.
Output Connector	F-type 75Ω / N-type 50Ω / SMA-type 50Ω
Input Connector	SMA-type
Input VSWR	1.7:1 max.
LO Leakage	-60 dBm @ RF input
MODELS with Internal Reference	±0.5 ppm -20 to +70°C (±1 ppm -40 to +80°C), ±1 ppm -20 to +70°C (±1.5 ppm -40 to +80°C)
MODELS with External 10 MHz Reference	Sine Wave, Level: -15 to +5 dBm. Supplied through output connector (with no ext. 10 MHz ref. present LO shifts -20 ppm)
DC Input	+12 to +18 V, 300-400 mA typ. Supplied through output connector
Temperature Range	Storage and operating: -40 to +80°C
Dimensions	127 x 80 x 30 mm (F- & SMA-connector), 133 x 80 x 30 mm (N-connector), for drawing, see www.smw.se
Weight	330 g (F- & SMA-connector) 344 g (N-connector)
Options	Customized gain & variation, Separate DC input connector F-, N- or SMA-type, Separate 10 MHz ref. input.
See the RF over Fiber and L-Band sections for output options	

Rev.11-20-2F

Above parameters are generic product family values. For part number specific min./max. values, please consult us.

Specifications are subject to change without notice. Products from Swedish Microwave AB are made for commercial use.