

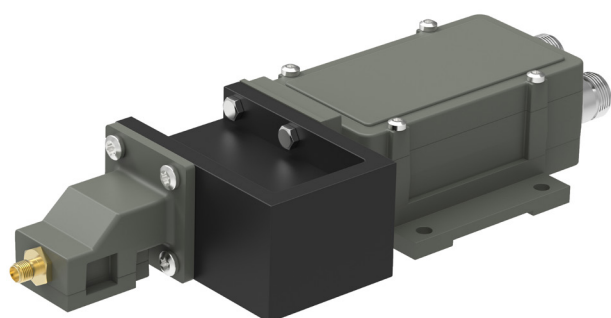
# Dual PLL BDC

Dual BDC (Block Down Converter) for simultaneous Low & High Ku-Band

The Dual BDC cover full Ku-Band Frequency Range simultaneously on Low and High Band Outputs.

The BDC is ideal for installation in various professional applications with Low Symbol Rate carriers.

Comes as Standard with Low Loss Isolator.




## Features

- Full Ku-band coverage
- Standard Ultra Low Phase Noise meets all profiles of DVB-S2X
- High P1dB and IP3
- Standard with Low Loss Isolator
- Choose between Internal Ref. or External Ref. input models
- Compact size and light weight
- Wide operating temperature range
- Low gain option
- For outdoor use
- Option Low profile to fit 1U for indoor build-in applications

## TECHNICAL SPECIFICATIONS

MODEL:	Ku-Band Dual BDC type E		Ku-Band Dual BDC type B			
Frequency Band	Low band	High band	Low band	High band		
Input Frequency	10.70 - 11.70 GHz	11.70 - 12.75 GHz	10.95 - 11.70 GHz	11.70 - 12.75 GHz		
LO Frequency	9.75 GHz	10.60 GHz	10.00 GHz	10.75 GHz		
Output Frequency	950 - 1950 MHz	1100 - 2150 MHz	950 - 1700 MHz	950 - 2000 MHz		
Spurious	-60 dBm typ. @ 1700 MHz	-70 dBm typ. @ 1700 MHz	-60 dBm typ. @ 1500 MHz	-70 dBm typ. @ 1500 MHz		
Gain	By request, 10 to 60 dB in 5dB steps (Factory programmable)					
Flatness	±0.4 dB max. within 30 MHz, ±3 dB max. over band					
Noise Figure / Noise Temperature	2 dB / 170 K @ 60dB gain configuration typ., increasing to appr. 20 dB / 28710 K @ 0 dB gain configuration					
Phase Noise	-35 dBc @ 10 Hz	-65 dBc @ 100 Hz	-82 dBc @ 1 kHz	-94 dBc @ 10 kHz	-98 dBc @ 100 kHz	-120 dBc @ ≥1MHz, typ.
Image Rejection	40 dB min.					
Output P1dB	+15 dBm typ. (+10 dBm @10-30 dB gain)					
Output IP3	+25 dBm typ. (+20 dBm @10-30 dB gain)					
Output VSWR	2.1:1 max.					
Output Connector	2 pcs F-type 75Ω / N-type 50Ω / SMA-type 50Ω					
Input Connector	SMA-type 50Ω					
Input VSWR	1.25:1 typ. with isolator					
LO Leakage	-60 dBm @ waveguide input					
MODELS with Internal Reference	±10 kHz -20 to +70°C (±15 kHz -40 to +80°C)					
MODELS with External 10 MHz Reference	Sine Wave, Level: -15 to +5 dBm. Supplied through the High band output connector (with no ext. 10 MHz ref. LO shifts -20 ppm)					
DC Input	+15 to +26 V. supplied through any or both output connectors (Ext. 10 MHz ref. model: High band output connector)					
Current Drain	260 mA @ +20 V   290 mA @ +18 V   320 mA @ +16 V					
Temperature Range	-40 to +80°C					
Dimensions	224 x 94 x 46 mm (F-connector), 229 x 94 x 46 mm (N-connector), for drawing, see <a href="http://www.smw.se">www.smw.se</a>					
Weight	465 g (F-connectors), 501 g (N-connectors)					
Options	Customized gain and variation, Extended low band 10.95-11.8 GHz / 10.95-12.15 GHz (type B), Low profile to fit 1U.					
<b>See the RF over Fiber and L-Band sections for output options</b>						

Rev.02-20-3F